



SHAREPOINT 2010 AND SHAREPOINT 2013 WITH SITES RUNNING IN SHAREPOINT 2010 MODE (HYBRID)

2014-03-20

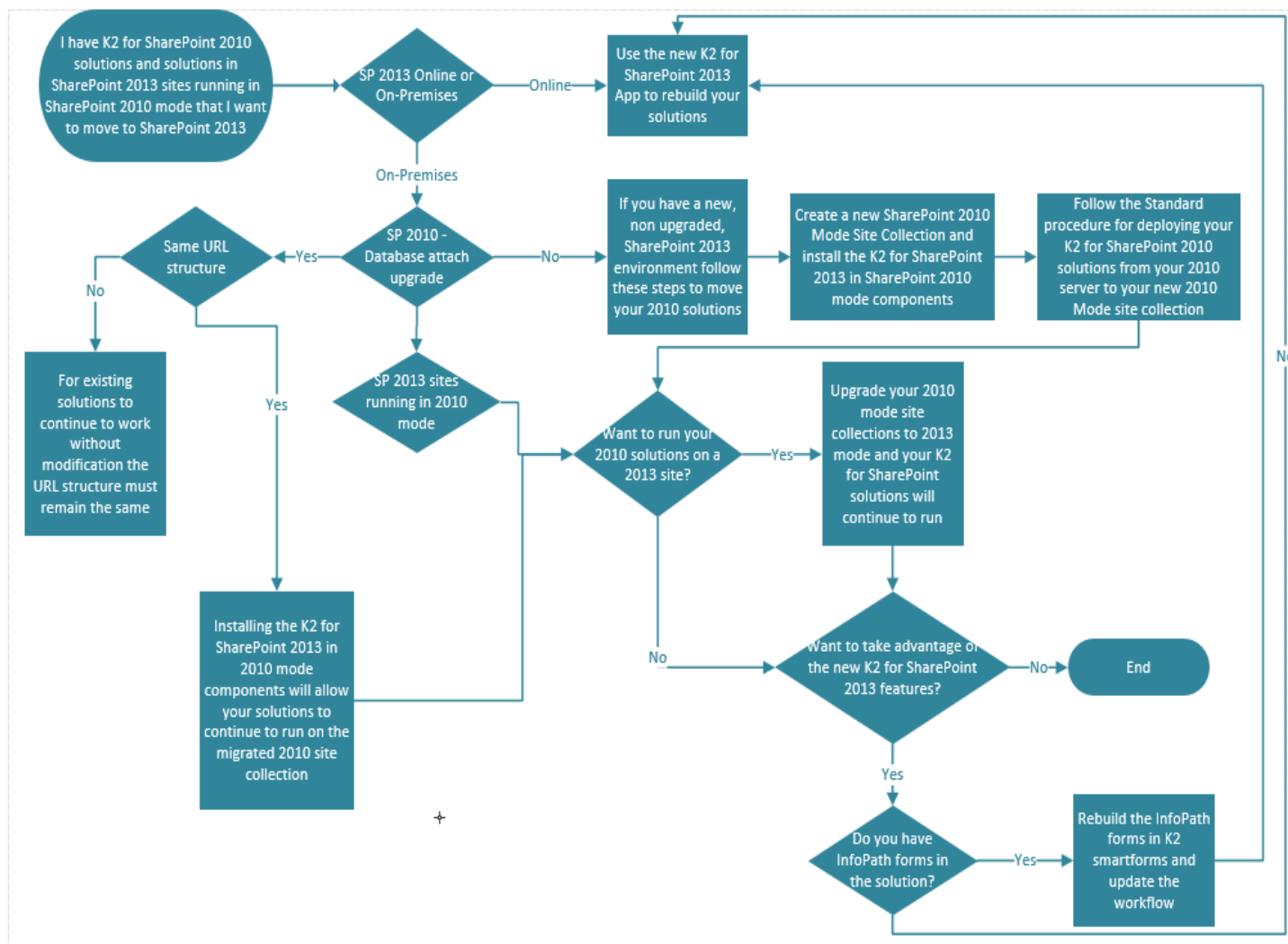


INTRODUCTION

K2 has released K2 for SharePoint which allows you build applications within SharePoint 2013 using data, forms, workflow and reports. You may or may not already be using SharePoint 2013 in your existing K2 environment and want to know how you can get to using the new features and functionality just released within your existing K2 environments. This article will help you understand what steps are required to get your environment installed and working with K2 for SharePoint.

The following scenario is described in this article **K2 blackpearl 4.6.6 or earlier with SharePoint 2010 and SharePoint 2013 with sites running in SharePoint 2010 mode (Hybrid)**

SHAREPOINT 2010 AND SHAREPOINT 2013 WITH SITES RUNNING IN SHAREPOINT 2010 MODE (HYBRID)



1. **Database Attach Method:** Microsoft does not offer a direct upgrade or migration strategy from either SharePoint 2010 to SharePoint 2013. The only method is the database attach method. The following articles will provide the required information on this method: <http://technet.microsoft.com/en-us/library/cc262483.aspx> and <http://technet.microsoft.com/en-us/library/cc303420.aspx>. Note: K2 does not test or support third party migration tools.
2. **K2 Requirements:** The following K2 software is required to run the K2 for SharePoint App. Ensure that you have upgraded to or installed the required versions of the software in the following order:
 - a. Upgrade to **K2 blackpearl 4.6.7 (4.12060.1590.0)**
 - b. Upgrade to **K2 smartforms 1.0.6 (4.12165.1625.0)** or if you do not have K2 smartforms install it using a K2 smartforms runtime license which is available from <https://portal.k2.com/licensekey/default.aspx>.



- c. Install **K2 smartforms Control Pack 1.0 (4.13180.0.0)**. Read the Control Pack documentation available on Help.K2.com for more information
 - d. Install **K2 for SharePoint (4.13350.1.0)**. For more information on installing and configuring K2 for SharePoint see the [K2 for SharePoint Getting started Guide](#).
 - e. [Configure the K2 for SharePoint App](#).
3. **SharePoint Online:** SharePoint Online does not allow apps from the store to request Full Control permissions. You can still use the K2 for SharePoint app from the store without Full Control, but you will not be able to design solutions that create, update or delete subsites. Your solutions will also not be able to create, update or delete groups, and in most cases will not be able to resolve group membership unless the Group Settings are changed. Read the following KB article if you require Full Control permissions on your site collection: [KB001443 – How To: Deploy a Full Control K2 Application to SharePoint Online](#)
4. **InfoPath:** If you currently use **InfoPath** forms in your K2 solutions and move SharePoint 2013 you will be required to rebuild the forms in K2 smartforms as InfoPath forms will not function in K2 for SharePoint Solutions. See [KB001434 – InfoPath to K2 smartforms migration](#) for more information.
5. **Process Portals and web parts:** K2 Process Portals and K2 web parts are not compatible with SharePoint 2013. There are new K2 App parts available and these should be used instead.
6. **Optional:** If you do not have [K2 Package and Deployment](#) installed in your environment and would like to make use of the functionality follow the steps below:
 - a. Install K2 blackpearl 4.6.7.
 - b. Run the Setup Manager from the blackpearl 4.6.7 source file ([blackpearl installation folder]/MSI/Installation/Setup.exe).
 - c. On the **K2 blackpearl Maintenance** Setup Manager Wizard screen, select the 'Modify K2 blackpearl' option.
 - d. On the **Select Components** screen, make sure the **K2 Package and Deployment** component is checked.
 - e. Continue the setup management sequence as normal.
 - f. The **Configuration Summary** screen will show all new services to be installed.
 - g. If the Package and Deployment installation is successful, the **Finished** screen will be shown.