



# K2 smartforms Product Documentation: Update Manager

K2 smartforms 4.6.10

June 2015



# K2 Update Manager

## Introduction

From the release of K2 4.6.10, the K2 Update Manager is available alongside the full installation packages. This installer makes it easier and quicker to update your K2 4.6.9 environment by adding new files and only updating files that have changed.

The K2 Update Manager updates all the K2 components (Blackpearl, SmartForms, Control Pack, and K2 for SharePoint) so you do not need to download and run multiple install files.

### Note

The K2 Update Manager can only be used to update K2 4.6.9 or later environments. If K2 4.6.9 is not installed, you will need to run the full installation package for 4.6.10 to upgrade your K2 environment to 4.6.10.

The following table describes installation scenarios.

Environment	Installation
New system (no K2)	<ul style="list-style-type: none"> <li>Full K2 4.6.10 Installation Package of components you are licensed for.</li> </ul>
Existing pre K2 4.6.9 system (e.g. K2 blackpearl 4.6.8 and K2 smartforms 1.0.7)	<ul style="list-style-type: none"> <li>Full K2 4.6.10 Installation Package of components you are licensed for, using the <b>Upgrade</b> option.</li> <li>If K2 for SharePoint 2010 is being updated, you will need to run through the K2 for SharePoint Configuration Wizard. If K2 for SharePoint 2013 is being used, the K2 App will need to be re-deployed to the SharePoint App Catalog.</li> </ul> <div style="background-color: #e6f2ff; padding: 5px; margin-top: 10px;"> <p><b>Note</b> Redeploying the App or running through the K2 for SharePoint Configuration Wizard is only needed for this scenario.</p> </div>
Existing K2 4.6.9 system	<ul style="list-style-type: none"> <li>K2 Update Manager run once on each machine with K2 components. The K2 for SharePoint App does not need to be redeployed.</li> </ul>

If you run the full K2 4.6.10 Installation Package on a system with K2 4.6.9 installed, K2 will automatically start the K2 Update Manager and update the product for that Installation Package. Once the update is complete for that product (e.g. Blackpearl), the full Installation Package will need to be run for each of the other licensed products (e.g. SmartForms and Control Pack). If you are on K2 4.6.9, it is recommended that you use the K2 Update Manager to update your environment rather than using the K2 Installation Package.

### Note

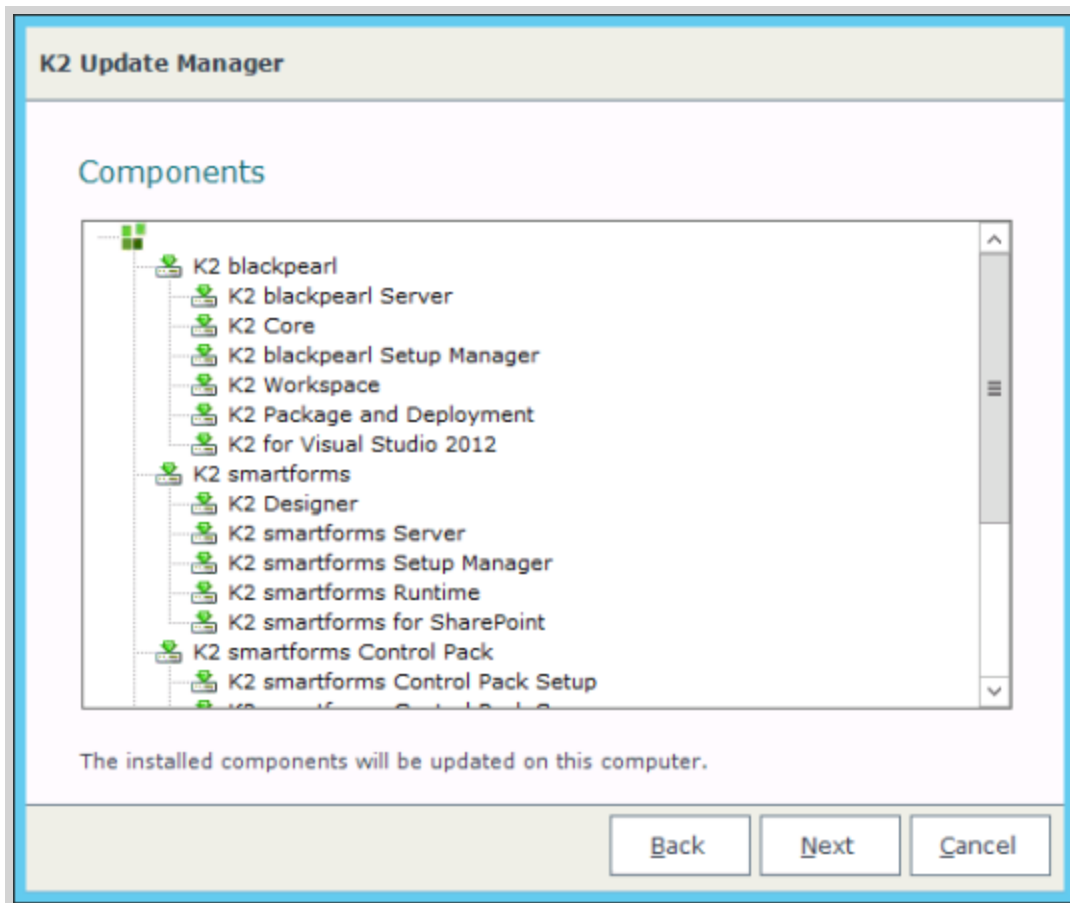
Permissions needed to use the Update Manager are the same as needed for installation of the full package. Please see the [K2 Installation Account](#) section for details.

## Using the K2 Update Manager

1. Once the Update Manager is launched, the Welcome screen will be displayed, click Next to continue.

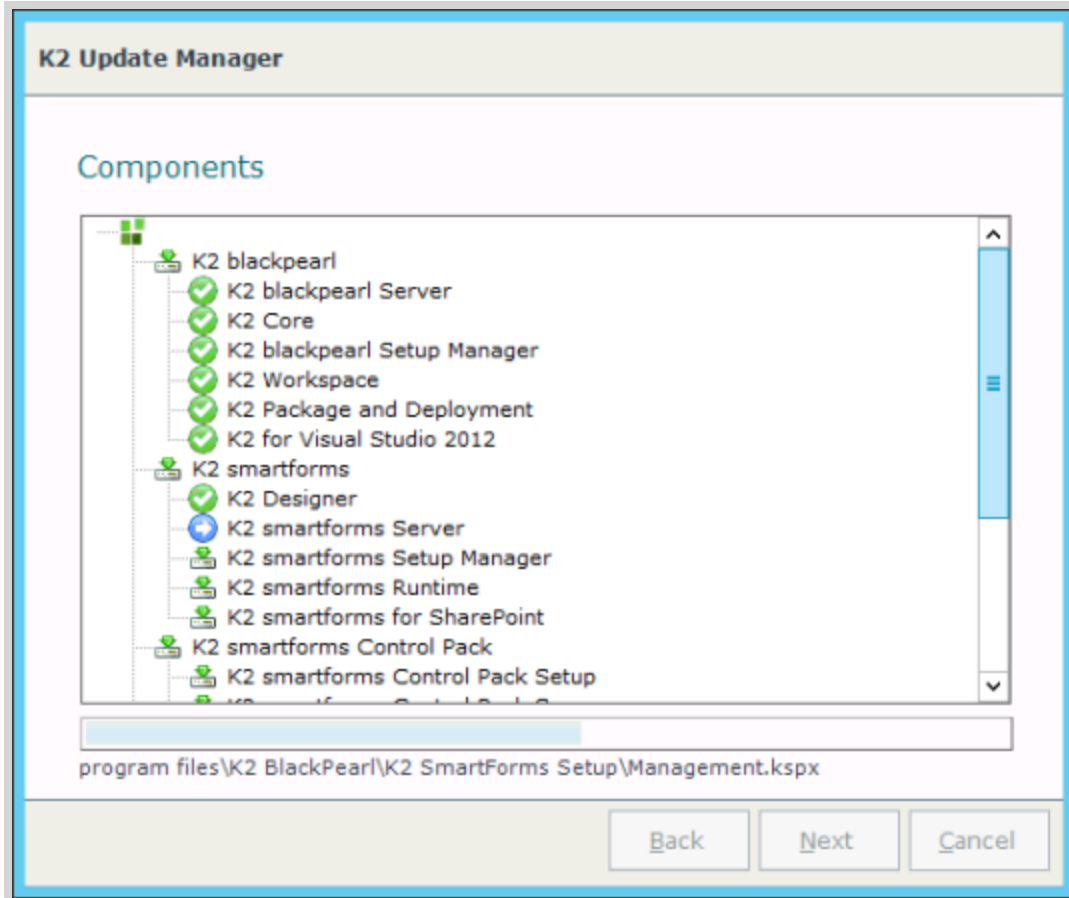


2. The Update Manager will detect the components installed on the machine and display them. Click Next to continue.





- Click Next to begin the update. The progress will be displayed in the progress bar.



- When the components have been updated, the Finish screen will be shown with a link to the update log file. Click Finish to close the Update Manager.
- If K2 for SharePoint, K2 for SharePoint 2010, or K2 for SharePoint 2013 in 2010 mode is being used, see the [K2 for SharePoint Configuration](#) topic in the K2 blackpearl ICG for information on running the configuration wizard. The Finish Panel will display the link to launch the K2 for SharePoint Configuration Wizard.



## Modifying an Updated 4.6.10 Environment

If you want to modify a system updated to 4.6.10, the following steps will have to be taken:

1. Copy the Original K2 4.6.9 installation media to the system.
2. Run the K2 Setup Manager and choose the Modify option.
3. In the tree view, select the components that needs to be installed.
4. Follow the screens and complete the installation.
5. After all the above steps have been completed successfully, run the K2 Update Manager 4.6.10 to update the newly added components to the latest version.



## Unattended Installation of the K2 Update Manager

As no user input is needed when executing the K2 Update Manager, there is no need to generate an unattended install output file (XML file). For an unattended installation of the K2 Update Manager, simply execute the following command:

**Setup.exe /NoUI /Update /ConnectionString:"[K2 DB Connectionstring]"**

The following line is an example of the command, remember that your connection string will be different:

**Setup.exe /NoUI /Update /ConnectionString:"Data Source=dlx;Initial Catalog=K2;integrated security=sspi;Pooling=True"**

### Caution

Only the **/NoUI /Update /ConnectionString** arguments are valid for use with the K2 Update Manager Setup.exe, trying to use **Setup.exe /Output:"{filename}"** for example, will cause an error. You can also not use a previously generated output file from a full installation; this will also cause an error ("The product is not installed on this system").



# Terms Of Use

## Acceptance of Terms

THIS DOCUMENTATION IS SUBJECT TO THE FOLLOWING TERMS OF USE ("TOU"). SOURCECODE TECHNOLOGY HOLDINGS INC. RESERVES THE RIGHT TO UPDATE THE TOU AT ANY TIME WITHOUT NOTICE. THE MOST CURRENT VERSION OF THE TOU CAN BE REVIEWED BY CLICKING ON THE "TERMS OF USE" LINK IN THE TABLE OF CONTENTS.

## Copyright

© 2008-2015 SOURCECODE TECHNOLOGY HOLDINGS, INC. ALL RIGHTS RESERVED. SOURCECODE SOFTWARE PRODUCTS ARE PROTECTED BY ONE OR MORE U.S. PATENTS. OTHER PATENTS PENDING. SOURCECODE, K2, K2 BLACKPEARL, K2 SMARTFORMS AND APPIT ARE REGISTERED TRADEMARKS OR TRADEMARKS OF SOURCECODE TECHNOLOGY HOLDINGS, INC. IN THE UNITED STATES AND/OR OTHER COUNTRIES. THE NAMES OF ACTUAL COMPANIES AND PRODUCTS MENTIONED HEREIN MAY BE THE TRADEMARKS OF THEIR RESPECTIVE OWNERS.

## Third-Party Integration

SOURCECODE MAY MODIFY, ADJUST OR REMOVE FUNCTIONALITY IN THE K2 SOFTWARE IN RESPONSE TO CHANGES MADE TO VERSIONS OF THE RELEVANT MICROSOFT OR OTHER THIRD PARTY PRODUCTS. THIS DOCUMENTATION MAY PROVIDE ACCESS TO OR INFORMATION ON CONTENT, PRODUCTS, AND SERVICES FROM THIRD PARTIES. SOURCECODE TECHNOLOGY HOLDINGS INC. IS NOT RESPONSIBLE FOR AND EXPRESSLY DISCLAIMS ALL WARRANTIES OF ANY KIND WITH RESPECT TO THIRD-PARTY CONTENT, PRODUCTS, AND SERVICES.

## Notice regarding content of this documentation

WHILE EFFORTS WERE MADE TO VERIFY THE COMPLETENESS AND ACCURACY OF THE INFORMATION CONTAINED IN THIS DOCUMENTATION, THE DOCUMENTS AND RELATED GRAPHICS CONTAINED IN THIS DOCUMENTATION COULD INCLUDE TECHNICAL INACCURACIES OR TYPOGRAPHICAL ERRORS. SOURCECODE TECHNOLOGY HOLDINGS INC. MAY MAKE IMPROVEMENTS AND/OR CHANGES IN THE DOCUMENTATION AT ANY TIME AND WITHOUT NOTICE. ERRORS AND INACCURACIES MAY BE REPORTED IN WRITING TO DOCUMENTATION@K2.COM